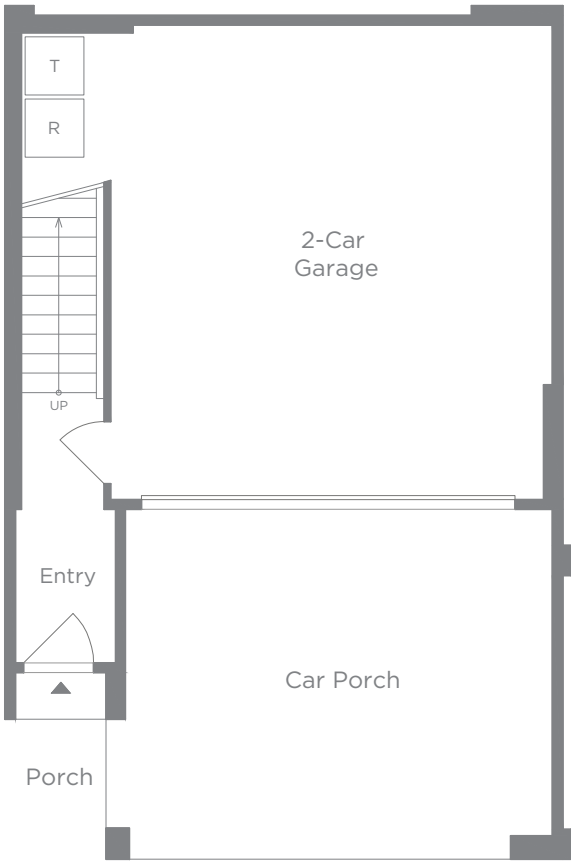
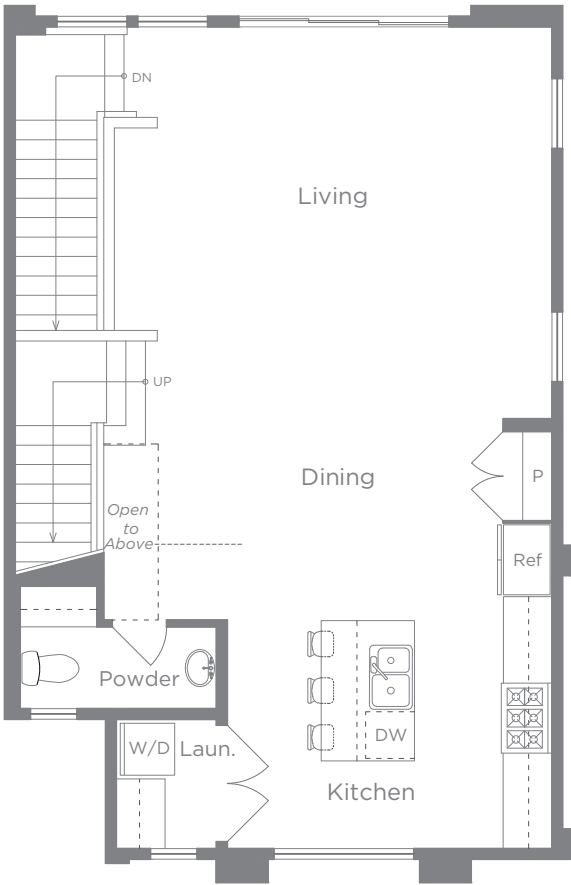


PLAN 2

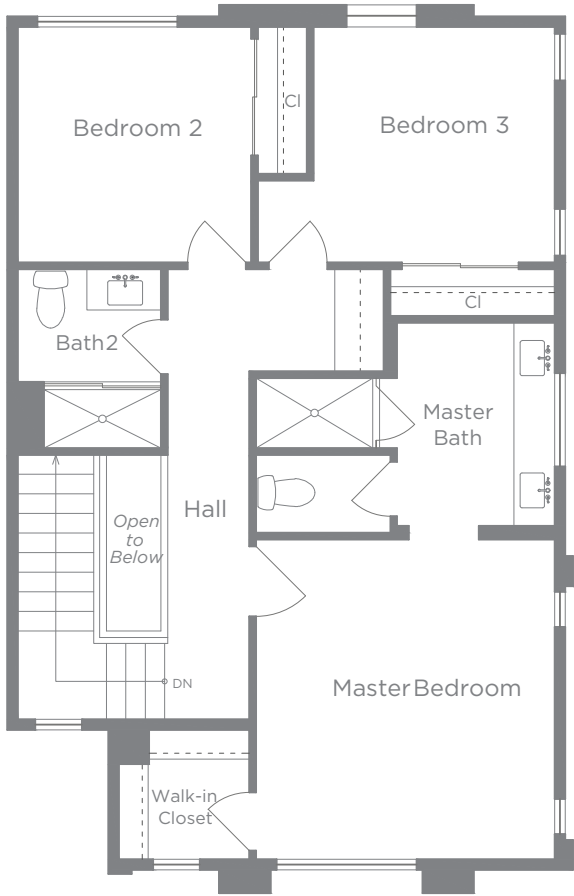
3 BEDROOMS • 2.5 BATHS • 2-CAR GARAGE + CAR PORCH • 1,660 SQ. FT.



FIRST FLOOR



SECOND FLOOR



THIRD FLOOR

PRELIMINARY

ColRich reserves the right to change elevations, specifications, materials, prices and terms without notice. All square footage is approximate. All maps, plans, landscaping and elevation renderings are artists' conception and are not to scale. Window locations, sizes and styles, ceiling heights, entry and room dimensions vary per plan and elevation. The availability of certain options is subject to construction status and schedule. Optional features may be predetermined and included at an additional cost on select home sites. Please see a Sales Representative for details. 9/18